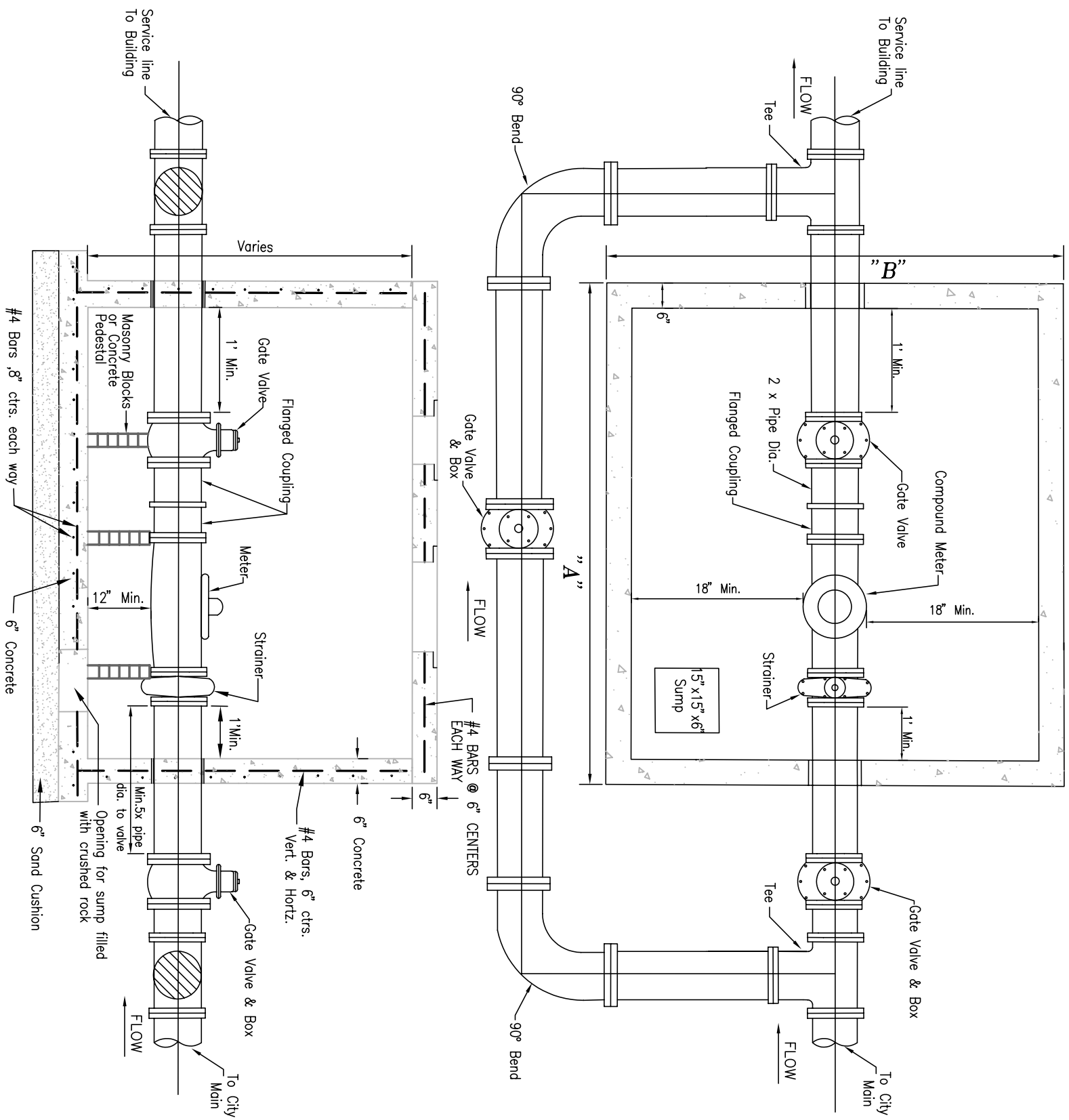
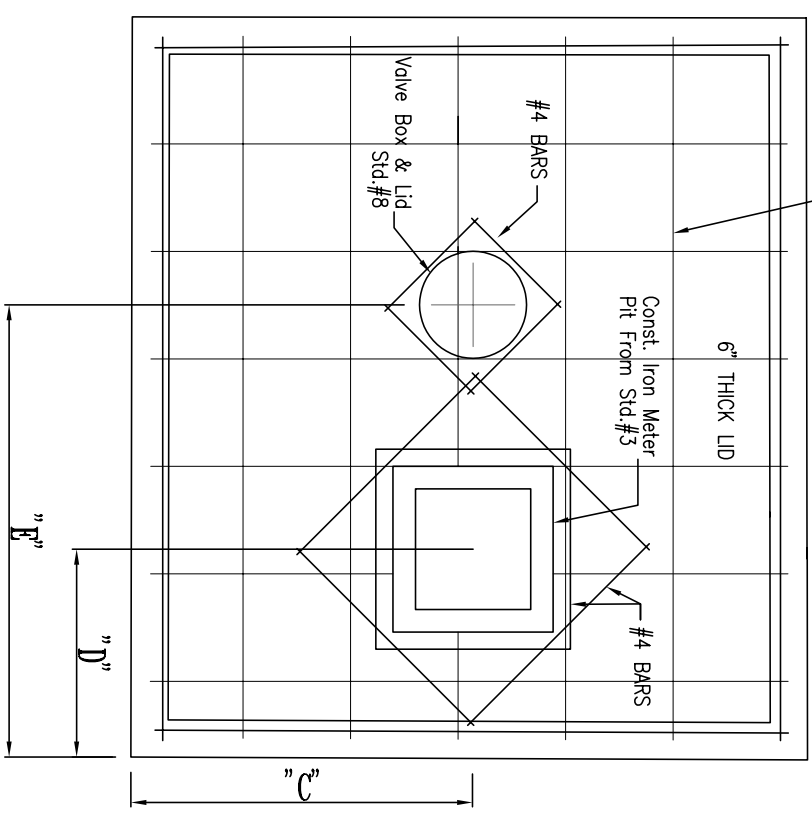


WATER LINE DETAIL & METER PIT




#4 BARS @ 6" CENTERS EACH WAY



| Meter Pit | A | B | C | D | E |
|-----------|--------|-------|-------|--------|---------|
| 3" | 7'-0" | 5'-0" | 2'-6" | 2'-8" | 4'-9" |
| 4" | 7'-3" | 5'-0" | 2'-6" | 2'-11" | 5'-4" |
| 6" | 8'-3" | 5'-6" | 2'-9" | 3'-3" | 6'-2" |
| 8" | 13'-0" | 6'-0" | 3'-0" | 5'-6" | 10'-11" |

*Dimensions are approximate. Openings must be centered over respective devices.

BLOCK ALL TEES & BENDS.



The City of MOORE Oklahoma

**WATER METER PIT
STANDARD 104**

APPROVED BY: *[Signature]*
DONALD VICK, P.E.
CITY ENGINEER

DATE: 03/08/2008

REVISED: